

National Aeronautics And Space Administration

The US Agency for International Development



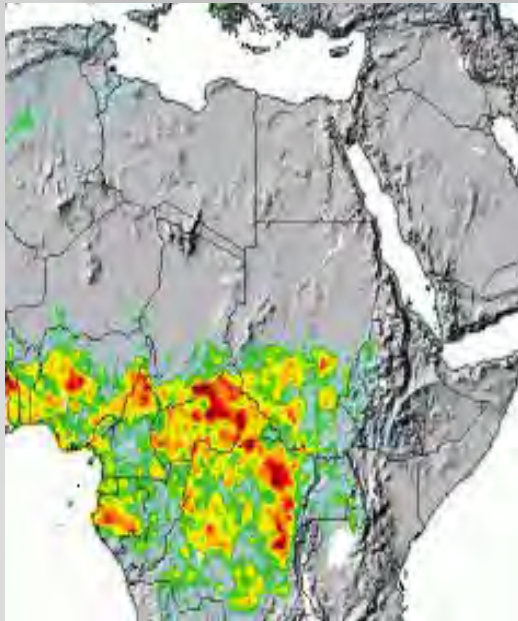
# From Space to Village: The SERVIR Program

**Daniel E. Irwin**  
**NASA/Marshall Space Flight Center**

# SERVIR

## Regional Platform for Science and Policy in the Americas and Africa

Using earth observations and predictive models for environmental management, disaster preparedness and response, and climate change adaptation.



Flood Forecasting in Africa



Training and Capacity Building

- Data and Models
- Online Maps
- Visualizations
- Decision Support
- Training
- Partnerships

# SERVIR-Central America

## The Regional Visualization and Monitoring System

- Launched in March 2005 at CATHALAC
- Addressed over 20 natural disasters and 11 environmental threats
- Access to thousands of satellite images and geographic datasets.
- Products routinely presented on television news
- Trained hundreds of scientists, researchers, and government employees



Mesoamerican presidents at Guanacaste Summit in July 2009 recognizing the importance of addressing national disasters at a regional level

# SERVIR-Africa

## The Regional Visualization and Monitoring System

- Launched in November 2008 at RCMRD
- Flood forecasting, flood mapping, and Rift Valley Fever
- Making new African geospatial datasets to publicly available for the first time
- Strengthening collaboration between NASA centers and other USG agencies
- South-South exchange between SERVIR nodes on two continents
- Training and capacity building

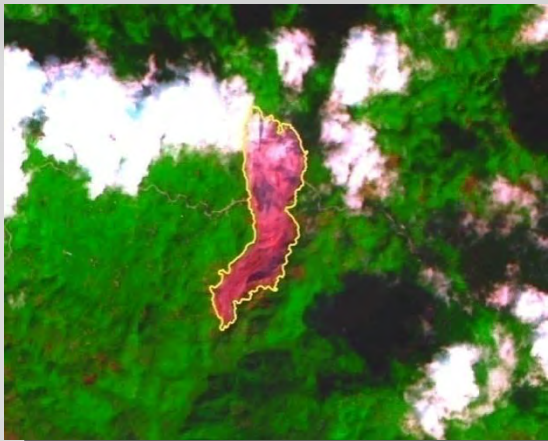


South-South Collaboration Between  
SERVIR-Central America and SERVIR-  
Africa facilities

# SERVIR Applications

Science for Society

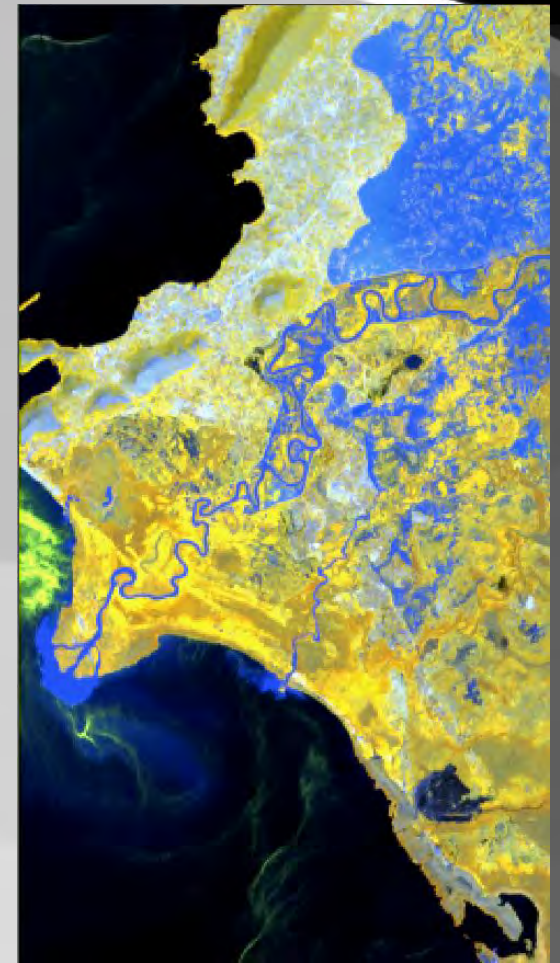
- Disaster Analysis
- Environmental Monitoring
- Air Quality and Public Health
- Climate Change and Biodiversity
- Short Term Weather Prediction



Mapping Landslide in Guatemala  
January 2009



Fires in Guatemala and Mexico  
April 2009



Flooding in Kenya  
November 2008

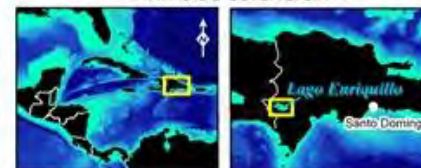
# Flooding in the Dominican Republic

March 2009

## Inundaciones en Lago Enriquillo, República Dominicana

Generado por CATHALAC el 4 de marzo de 2009

- MAPAS DE UBICACIÓN -



Según el uso del suelo de SEMARENA y la imagen más actual de Landsat, 2475 ha de agricultura mixta, 715 ha de cultivos intensivos y 25 ha de pastos, están inundadas actualmente.



Uso del suelo, 2003, SEMARENA

CIRCUNSTANCIA	AREA DEL LAGO (HA)*
Condiciones normales: 2000 sept 15	20,535
Huracán Noel: 2007 nov 6	+1513
Inundación: 2008 ene 1	+1013
Inundación: 2008 jul 1	+3379
Inundación: 2009 ene 1	+129
Inundación: 2009 feb 28	+4590
<b>Condiciones actuales: 2009 feb 28</b>	<b>31,158</b>

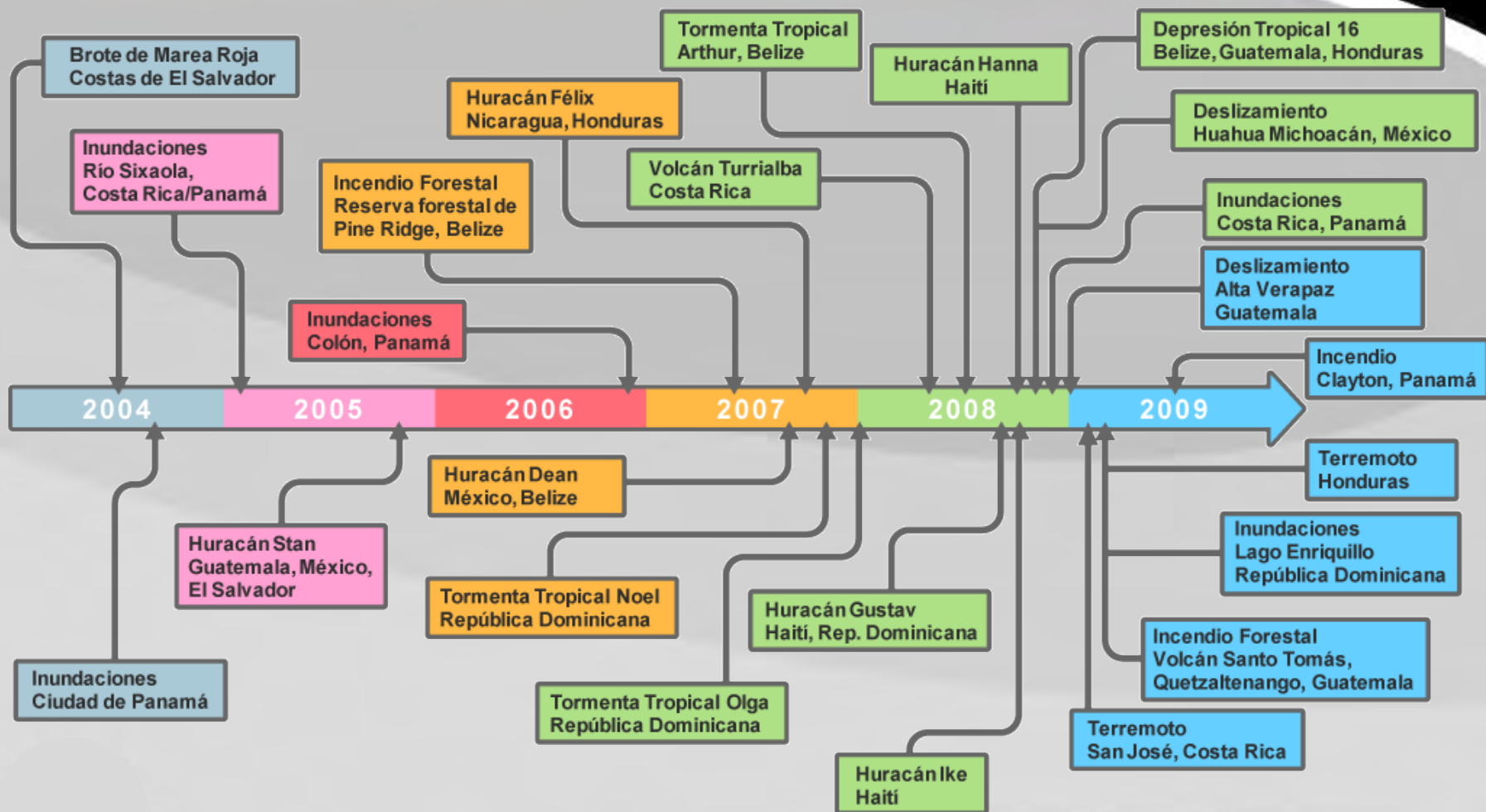
\*Estos valores son aproximados, basados en MODIS y Landsat (abajo).



www.servir.net



# Extreme Events



# Possible Future SERVIR Network

